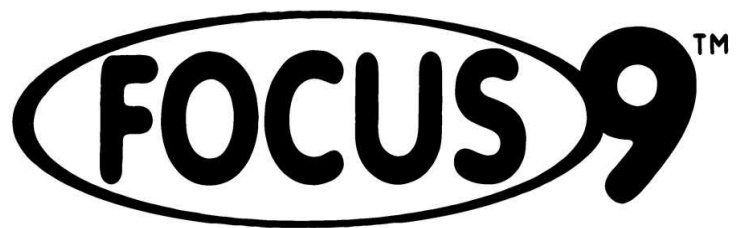
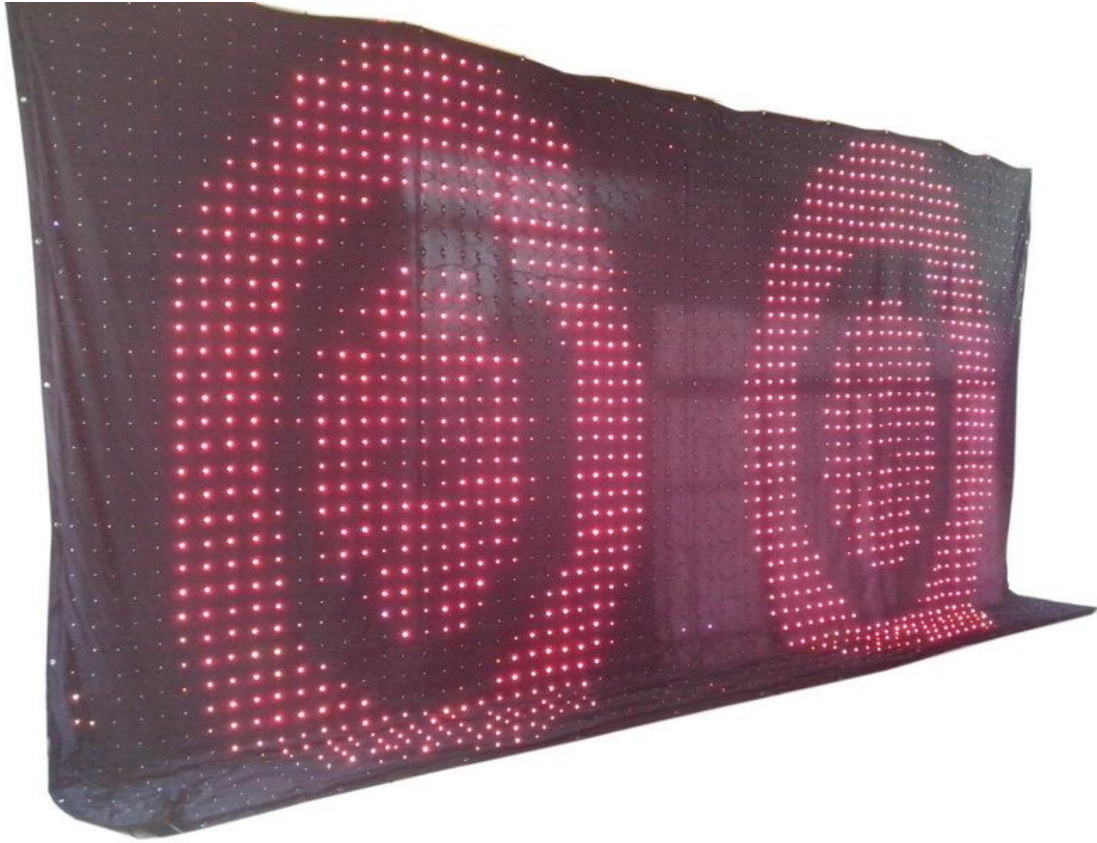


LED CURTAIN F9LEDC01



Quick Reference Guide

THANK-YOU

First of all, thank you very much for choosing and trust on our products.

The LED Curtain is a great and reliable device that can meet most of your demands for entertainment markets. It can be just plug-and-play, and also can be controlled via standard DMX512 for sophisticated requirements.

All of our products are made on our business philosophy:

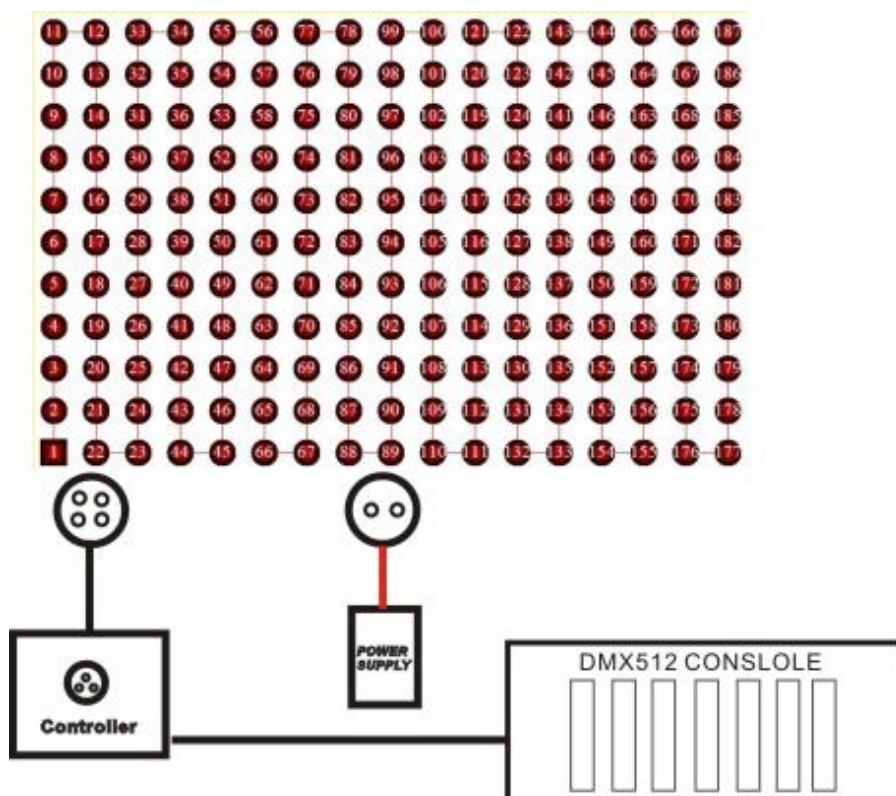
We believe that satisfy customers is the key to successful business and that it is the only path to sustained profitability.

We believe that there is no point in supplying products that are substandard or inadequate. In the long run.

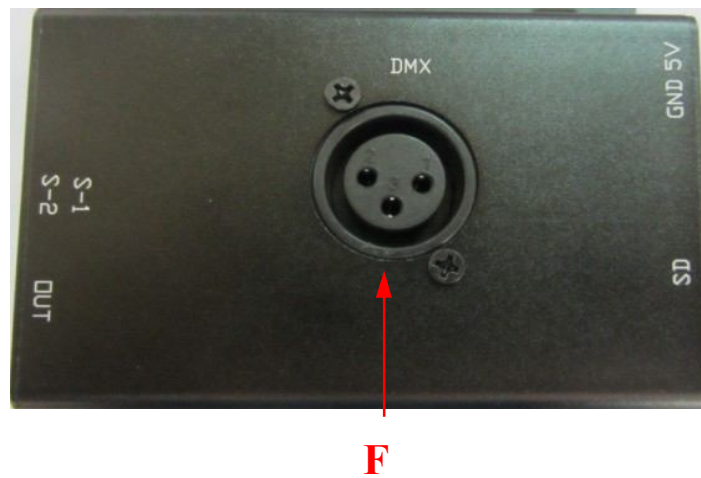
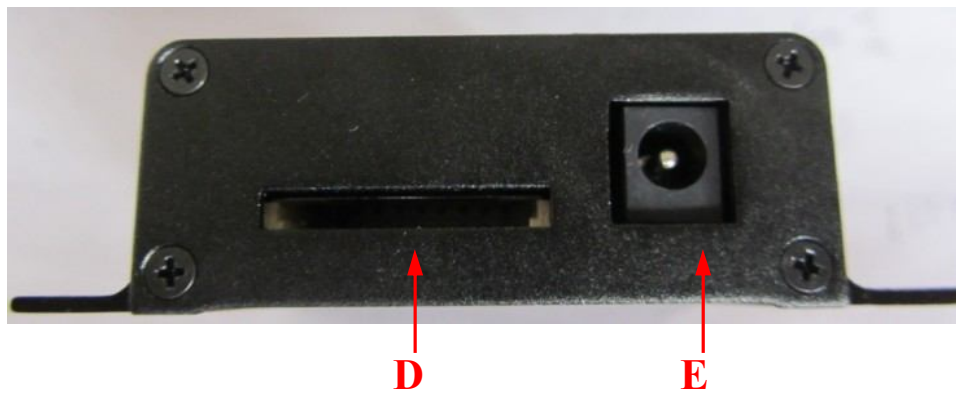
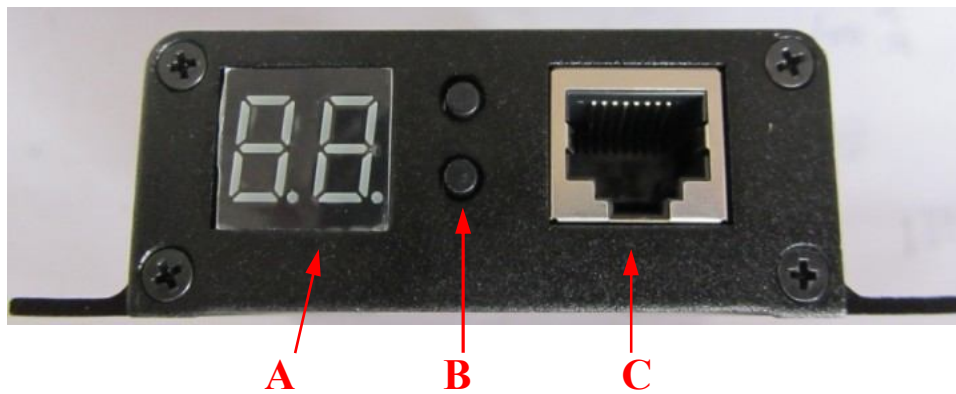
You can always trust on us.

1. Connection

When controlled by SD Card/DMX controller, offered you the following pictures and settings of LED Player for your reference:



2. Controller



A	LED Digitron, show program number or DMX address
B	Button S-1 and button S-2
C	Connect to LED curtain
D	SD card, format: FAT32
E	5V/1A power input
F	DMX Input

- 1) Controllers' panel has two handles "UP" and "DOWN", they are used to play offline program while offline working, the controller stop playing when select "0", the controller auto play when select "A".
- 2) Press and hold "S-1" into speed regulation mode, press "UP" and "DOWN"

adjust the SD card play speed, slow to fast from 1 to 15. "A" is auto. when complete, Press and hold "UP" to save.

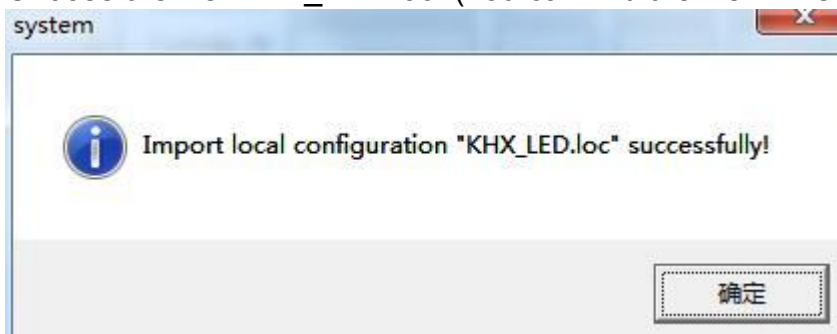
- 3) Press and hold "S-2" into DMX mode, press "UP" and "DOWN" to set the DMX address, DMX address can be set 1-99. when complete, Press and hold "UP" to save.

The 8 DMX channels are:

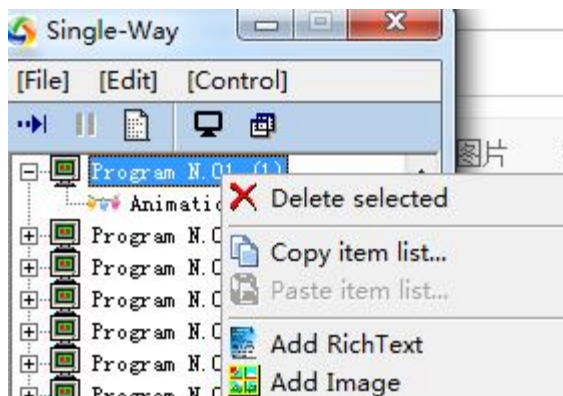
DMX Channel	Function	Value
CH1	All LED off	0-60
	Manual control mode	65-190
	Auto mode	191-255
CH2	Program 1-10	0-255
CH3	Program 1-20	0-255
CH4	Program 21-30	0-255
CH5	Speed	0-255
CH6	Dimmer	0-255
CH7	Program: R、 G、 B	0-255
CH8	Program: Gradient,Strobe	0-255

3. Create SD card play file

- 1) "Control"-> "Switch to Single-Way edition" in LED Player.
- 2) "Control"->"Settings", Click"Modify", then click"Import", Choose the file "KHX_LED.loc".(You can find the file in Disc)



- 3) Right- Click "Program N." to add your own program. (You can add Infinite patterns in a Program)



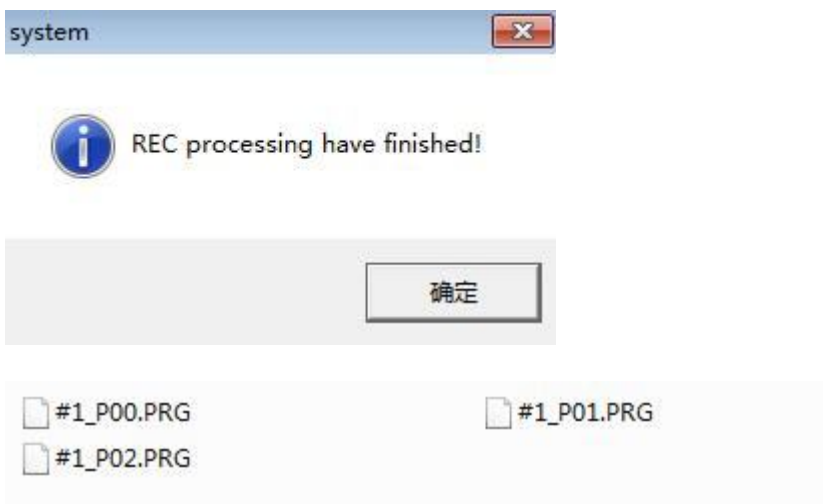
- 4) When you completed, Click the "Program manager" button.



- 5) Select the program you need, Click the "REC" to Record them



- 6) When complete, Click the "Folder" button, copy all the files to SD card.



4. Remote control

- 1) Button 1: Program up selection
- 2) Button 2: Program down selection
- 3) Button 3: Speed to fast selection
- 4) Button 4: Speed to slow selection
- 5) Button 5: Brightness selection (4 levels, "0" is the brightest)
- 6) Button 6: Off screen "0" or the program automatically play "A"



5. Disassembly

- 1) Cut off Power Cable
- 2) Cut off Signal Cable
- 3) Unfasten the velcro between LED Vision Curtain
- 4) Release all reusable zip ties
- 5) Clean the LED Vision Curtain
- 6) Fold the LED Vision Curtain and put it into the carton

6. Replacement of the LEDs

- 1) Cut off the power supply
- 2) Disconnect the power cable and signal cable
- 3) Open the zip fastener at the side of led curtain
- 4) Disconnect the wires between the LEDs
- 5) Take out the LED holder from the cloth
- 6) Take out PCB board with LEDs
- 7) Connect the replace PCB board with LEDs (Please note the marks "-->" and color of PCB on the PCB board.)
- 8) Insert the lamp holder into the hole made on the cloth
- 9) Connect the power cable and signal cable , then turn on the power for testing.
- 10) Still without working, please test the wires connection
- 11) Close the cloth again.