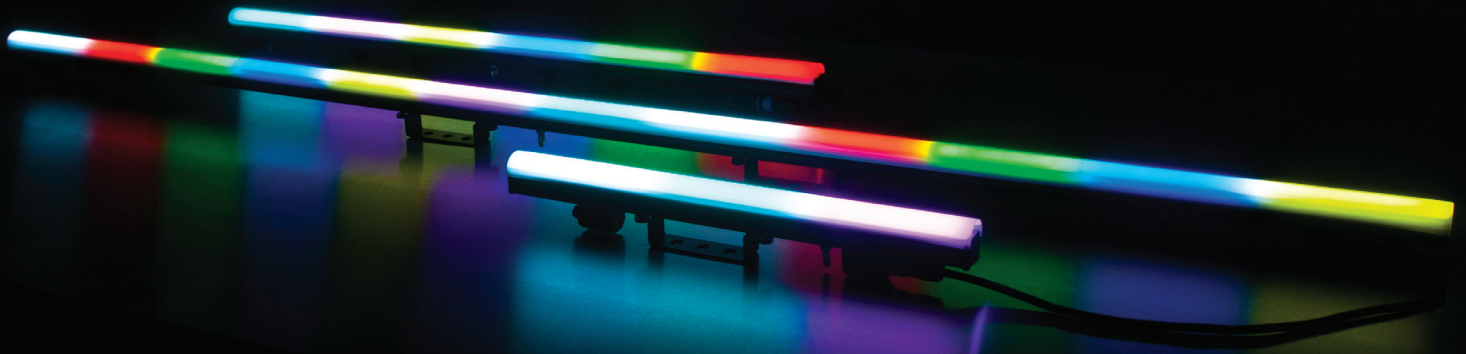


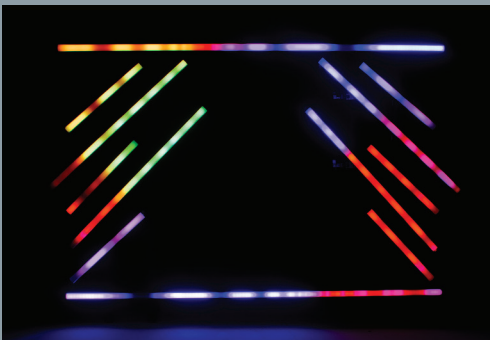


CREATIVITY
UNLEASHED!



PIXIE STRIP SERIES

THIS VERSATILE COLLECTION OF PIXEL BATTENS COMBINE VIBRANT LEDS WITH INTELLIGENTLY-DESIGNED HOUSINGS TO CREATE A POWERFUL AND VERSATILE SYSTEM. IT CAN BE USED TO DESIGN DAZZLING PIXEL-MAPPED DISPLAYS FOR TOURING SHOWS AND ONE-OFF EVENTS AS WELL AS FOR A WIDE VARIETY OF PERMANENT INSTALLATIONS.



The series includes three sizes of pixel strip bars, which can be combined together in any combination to fit with the dimensions and design of a stage's set or venue's interior design.

All three models have the same 16.5mm pixel pitch and are designed such that seamless pixel spacing can be achieved when any two fixtures are placed end-to-end. To aid with setting this up, the units are all fitted with magnetic end caps that will snap adjacent fixtures together to create a seamless run of perfectly spaced LEDs from one Pixie Strip to the next. The LEDs across all three models offer a resolution of 8 bits per color (24 bits per pixel) and a refresh rate of 44,000Hz, allowing flicker free operation for TV, film and other broadcast applications.



Easy and versatile control options are handled by the Pixie Driver 2000 (sold separately) which provides simple on-board manual dimming and strobe control as well as full pixel mapping using either the Kling-Net, Art-Net or sACN (streaming ACN) protocol. This compact device features a universal auto switching power supply (100-240v) with a locking power input socket, a 4-button LCD control menu display for setup, RJ45 Ethernet in/out ports, and two 4-pin outputs for connection to Pixie Strips. A maximum of 2,040 pixels can be driven from a single unit via Kling-Net and upto 340 pixels can be driven via Art-Net or sACN. The Pixie Driver 2000 can be mounted in a standard 19-inch rack (rack ears included) or attached to truss with a clamp (not included).

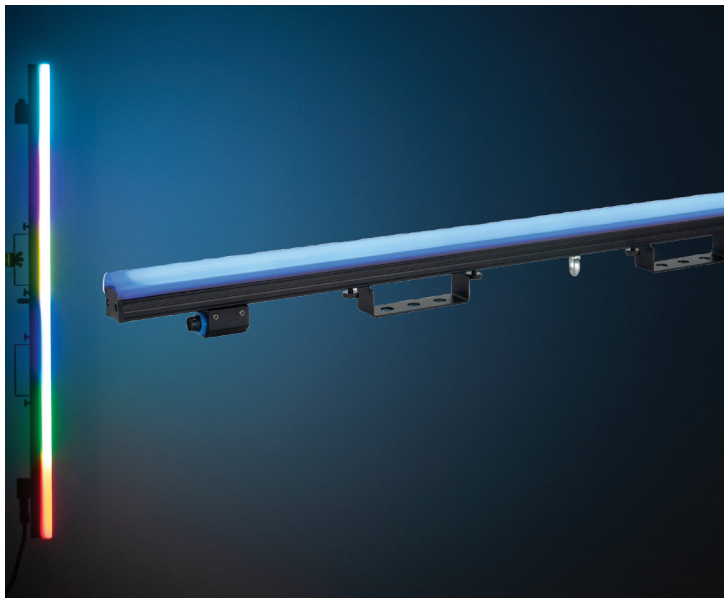
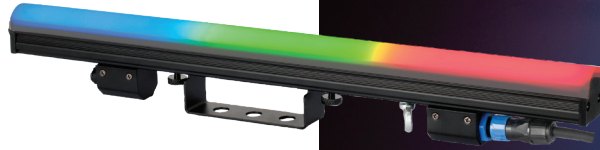
www.ADJ.com/pixie-strip-series

PIXIE STRIP SERIES



PIXIE STRIP 30

- SMD RGB 3-in-1 LEDs
- Color Resolution: 8 bits per color (24 bit per pixel)
- Viewing Angle: 120 x 120 degrees
- Pixels Per Fixture: 30 pixels
- Pixel Pitch (pixel center-to-center) 16.5mm
- PWM (Pulse Width Modulation): 44,000Hz
- Max Power Consumption: 6W
- Dimensions (LxWxH): 20" x 2.33" x 2.33" / 508x59.3x59.3mm



PIXIE STRIP 60

- SMD RGB 3-in-1 LEDs
- Color Resolution: 8 bits per color (24 bit per pixel)
- Viewing Angle: 120 x 120 degrees
- Pixels Per Fixture: 60 pixels
- Pixel Pitch (pixel center-to-center) 16.5mm
- PWM (Pulse Width Modulation): 44,000Hz
- Max Power Consumption: 12W
- Dimensions (LxWxH): 39.6" x 2.33" x 2.33" / 1005x59.3x59.3mm



PIXIE STRIP 120

- SMD RGB 3-in-1 LEDs
- Color Resolution: 8 bits per color (24 bit per pixel)
- Viewing Angle: 120 x 120 degrees
- Pixels Per Fixture: 120 pixels
- Pixel Pitch (pixel center-to-center) 16.5mm
- PWM (Pulse Width Modulation): 44,000Hz
- Max Power Consumption: 24W
- Dimensions (LxWxH): 78.8" x 2.33" x 2.33" / 2000x59.3x59.3mm

4-PIN IN/OUT DATA CONNECTION



PIXIE STRIP SERIES



Each Fixture Includes 4 Lenses:

- 1 White Square Lens
- 1 Grey Square Lens
- 1 White Circular Lens
- 1 Grey Circular Lens



PIXIE DRIVER 2000

- Power/data for Pixie Strip Series
- Manual RGB mode
- Internal programs
- Manual Dimming and Strobe Control
- Full Pixel Mapping Control
- 2,040 Pixels via Kling-Net
- 340 Pixels via Art-Net and sACN (streaming ACN)
- OLED screen with 4-button menu
- Rack mount ears + bolt for hanging
- KlingNet: 34 Pixie Strip 30; 17 Pixie Strip 60; 8 Pixie Strip 120
- ArtNet: 170 pixels max each port
- sACN: 170 pixels max each port
- Dimensions (LxWxH): 18.9" x 7.11" x 2.91" / 480x180.8x74mm
- Weight: 5.6 lbs. / 2.5 kg.

4-Pin / 16-Gauge Data Cables:



PSLC5 (PIX188):
5-foot Data Cable



PSLC10 (PIX200):
10-foot Data Cable



PSLC15 (PIX213):
15-foot Data Cable



PSLC25 (PIX229):
25-foot Data Cable



PSLC50 (PIX242):
50-foot Data Cable