

ELIMINATOR[®]

LIGHTING



Decor Cocktail Table

User Guide

©2019 **Eliminator Lighting** all rights reserved. Information, specifications, diagrams, images, and instructions herein are subject to change without notice. Eliminator logo and identifying product names and numbers herein are trademarks of Eliminator Lighting. Copyright protection claimed includes all forms and matters of copyrightable materials and information now allowed by statutory or judicial law or hereinafter granted. Product names used in this document may be trademarks or registered trademarks of their respective companies and are hereby acknowledged. All non-Eliminator brands and product names are trademarks or registered trademarks of their respective companies.

Eliminator Lighting and all affiliated companies hereby disclaim any and all liabilities for property, equipment, building, and electrical damages, injuries to any persons, and direct or indirect economic loss associated with the use or reliance of any information contained within this document, and/or as a result of the improper, unsafe, insufficient and negligent assembly, installation, rigging, and operation of this product.

Eliminator Lighting USA

6122 S. Eastern Ave. | Los Angeles, CA 90040 USA

Tel: (323) 948-0480 | Fax: 888-287-5224 | www.eliminatorlighting.com | info@eliminatorlighting.com

DOCUMENT VERSION

An updated version of this document may be available online.

Please check www.eliminatorlighting.com for the latest revision/update of this document before beginning installation and use.

Date	Document Version	Notes
11/26/2019	1	Initial release.

CONTENTS

General Information	4
Limited Warranty (USA Only)	5
Safety Guidelines	6
Maintenance Guidelines	7
Overview	8
Assembly Guidelines	9
FAQs Technical Specifications	12
Dimensional Drawings	13

GENERAL INFORMATION

INTRODUCTION

Please read and understand all instructions in this manual carefully and thoroughly before attempting to use this product. These instructions contain important safety and use information.

UNPACKING: This product has been thoroughly tested and has been shipped in perfect condition. Carefully check the shipping carton for damage that may have occurred during shipping. If the carton appears to be damaged, carefully inspect your product for damage and be sure that all accessories necessary to assemble the product have arrived intact. In the event that damage has been found or parts are missing, please contact our customer support team for further instructions.

Please do not return this product to your dealer without first contacting customer support at the number listed below. Please do not discard the shipping carton in the trash. Please recycle whenever possible.

CUSTOMER SUPPORT

Tel: (323) 213-4592 | Fax: 323-582-2941 | www.eliminatorlighting.com | support@eliminatorlighting.com

WARRANTY RETURNS

All returned service items, whether under warranty or not, must be freight pre-paid and accompanied by a return authorization (R.A.) number. The R.A. number must be clearly written on the outside of the return package. A brief description of the problem as well as the R.A. number must also be written down on a piece of paper and included in the shipping container. If the unit is under warranty, you must provide a copy of your proof of purchase invoice. Items returned without an R.A. number clearly marked on the outside of the package will be refused and returned at the customer's expense. You may obtain an R.A. number by contacting customer support.

ELIMINATOR LIMITED WARRANTY (USA)

A. Eliminator Lighting, an ADJ Products, LLC brand, hereby warrants, to the original purchaser, ADJ Products, LLC products to be free of manufacturing defects in material and workmanship for a prescribed period from the date of purchase (see specific warranty period on reverse). This warranty shall be valid only if the product is purchased within the United States of America, including possessions and territories. It is the owner's responsibility to establish the date and place of purchase by acceptable evidence, at the time service is sought.

B. For warranty service you must obtain a Return Authorization number (RA#) before sending back the product, please contact ADJ Products, LLC Service Department at 800-322-6337. Send the product only to the ADJ Products, LLC factory. All shipping charges must be pre-paid. If the requested repairs or service (including parts replacement) are within the terms of this warranty, ADJ Products, LLC will pay return shipping charges only to a designated point within the United States. If the entire instrument is sent, it must be shipped in its original package. No accessories should be shipped with the product. If any accessories are shipped with the product, ADJ Products, LLC shall have no liability whatsoever for loss of or damage to any such accessories, or for the safe return thereof.

C. This warranty is void if the serial number has been altered or removed; if the product is modified in any manner which ADJ Products, LLC concludes, after inspection, affects the reliability of the product; if the product has been repaired or serviced by anyone other than the ADJ Products, LLC factory unless prior written authorization was issued to purchaser by ADJ Products, LLC; if the product is damaged because not properly maintained as set forth in the instruction manual.

D. This is not a service contract, and this warranty does not include maintenance, cleaning or periodic check-up. During the period specified above, ADJ Products, LLC will replace defective parts at its expense with new or refurbished parts, and will absorb all expenses for warranty service and repair labor by reason of defects in material or workmanship. The sole responsibility of ADJ Products, LLC under this warranty shall be limited to the repair of the product, or replacement thereof, including parts, at the sole discretion of ADJ Products, LLC. All products covered by this warranty were manufactured after August 15, 2012, and bear identifying marks to that effect.

E. ADJ Products, LLC reserves the right to make changes in design and/or improvements upon its products without any obligation to include these changes in any products theretofore manufactured. No warranty, whether expressed or implied, is given or made with respect to any accessory supplied with products described above. Except to the extent prohibited by applicable law, all implied warranties made by ADJ Products, LLC in connection with this product, including warranties of merchantability or fitness, are limited in duration to the warranty period set forth above. And no warranties, whether expressed or implied, including warranties of merchantability or fitness, shall apply to this product after said period has expired. The consumer's and/or Dealer's sole remedy shall be such repair or replacement as is expressly provided above; and under no circumstances shall ADJ Products, LLC be liable for any loss or damage, direct or consequential, arising out of the use of, or inability to use, this product.

This warranty is the only written warranty applicable to Eliminator Lighting, an ADJ Products, LLC brand, and supersedes all prior warranties and written descriptions of warranty terms and conditions heretofore published.

MANUFACTURER'S LIMITED WARRANTY PERIODS:

All Eliminator Lighting products (except laser diodes) = 1-year (365 days) Limited Warranty (Such as: Special Effect Lighting, Intelligent Lighting, UV lighting, Strobes, Fog Machines, Bubble Machines, Mirror Balls, Par Cans, Trussing, Lighting Stands etc., excluding lamps)

Laser Products = 1 Year (365 Days) Limited Warranty (excluding laser diodes which have a 6 month limited warranty)

Batteries = 180 Day Limited Warranty

Please click here to register your Eliminator product: <https://www.adj.com/portal/user/register/>

SAFETY GUIDELINES

To guarantee smooth operation, it is important to follow all instructions and guidelines in this manual. **ELIMINATOR LIGHTING** is not responsible for injury and/or damages resulting from the misuse of this product due to the disregard of the information printed in this manual. Only qualified and/or certified personnel should perform installation of this product and only the original rigging parts included with this product should be used for installation. Any modifications to this product and/or the included mounting hardware will void the original manufacturer's warranty and increase the risk of damage and/or personal injury.



THIS PRODUCT CONTAINS NO USER SERVICEABLE PARTS. DO NOT ATTEMPT ANY REPAIRS YOURSELF; DOING SO WILL VOID YOUR MANUFACTURER'S WARRANTY. DAMAGES RESULTING FROM MODIFICATIONS TO THIS PRODUCT AND/OR THE DISREGARD OF SAFETY INSTRUCTIONS AND GUIDELINES IN THIS MANUAL VOID THE MANUFACTURER'S WARRANTY AND ARE NOT SUBJECT TO ANY WARRANTY CLAIMS AND/OR REPAIRS.



KEEP FLAMMABLE MATERIALS AWAY FROM THE TABLE AND SCRIM!



DO NOT SET UP OR PLACE ON SOFT OR UNEVEN SURFACES!

TABLE MUST BE ORIENTED IN A VERTICAL POSITION!

DO NOT EXCEED THE MAXIMUM LOAD WEIGHT OF 66 LBS (30 KG)!



DO NOT USE TABLE WITHOUT 4 SUPPORT TUBE SCREWS INSTALLED AND SECURELY TIGHTENED!

DO NOT MOVE WHEN LOADED!

ONLY use the original packaging and materials to transport for service.

MAINTENANCE GUIDELINES

SCRIM CLEANING

The fire retardant coating on the fabric of the scrim is a topical chemical treatment. **The flame resistance of the treated fabric has an approximate life span of up to one year. This life span decreases with repeated use and is reduced even further by conventional cleaning methods.** Chemically treated fabrics must be dry-cleaned with a non-liquid cleaning agent. To maintain the fire retardant coating, a suitable treatment or spray is available online or from your local supplier. Please seek Fire Marshal clearance for fire retardant application and jurisdiction.

MAINTENANCE

Regular inspections are recommended to ensure proper function and extended life. Should you need any spare parts, please order genuine parts from Eliminator Lighting.

Be sure all screws and fasteners are securely tightened at all times. Loose screws may fall out during normal use, resulting in damage or injury.

OVERVIEW

INCLUDED ITEMS



Table Top (x1)



Base Plate (x1)



Carry Bag (x1)



Support Tube (x1)



Scrim (x1)



Tightening Screws (x4)



Adhesive Pads (x4)

A S S E M B L Y G U I D E L I N E S



FLAMMABLE MATERIAL WARNING

Keep devices minimum 5.0 feet (1.5m) away from flammable materials and/or pyrotechnics.

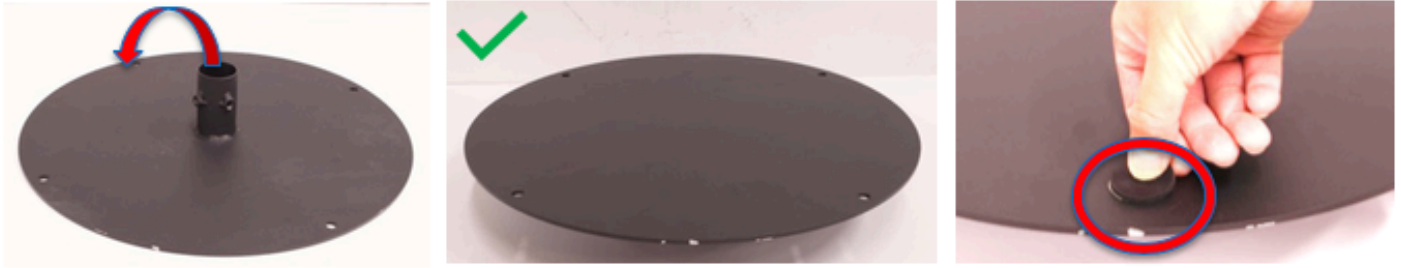


DO NOT INSTALL THIS PRODUCT IF YOU ARE NOT QUALIFIED TO DO SO!

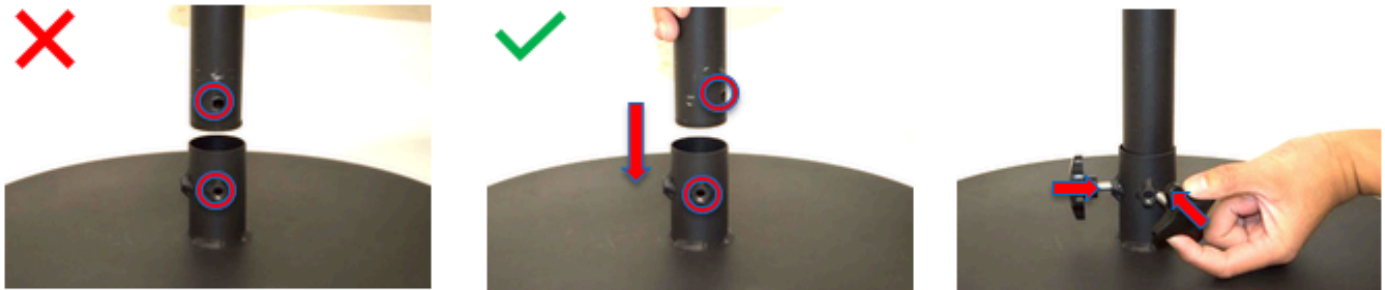
DO NOT EXCEED THE MAXIMUM LOAD WEIGHT OF 66 LBS (30 KG).

ASSEMBLY GUIDELINES

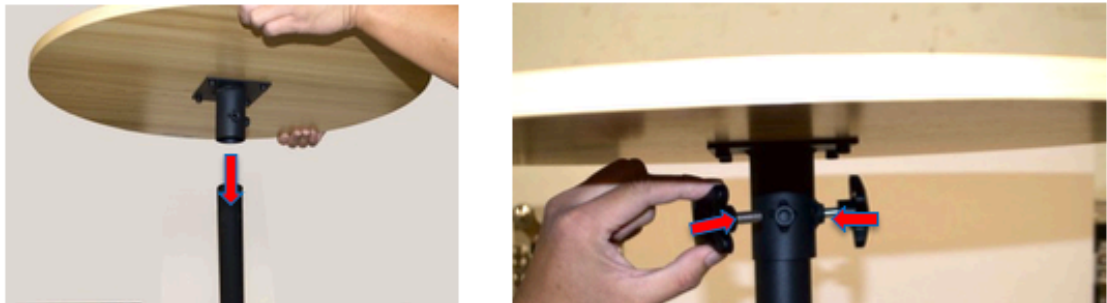
NOTE: Before assembling the table, carefully remove all contents from the included bags.



1. Flip the Base Plate so that the flat side is facing upwards. Peel the backing paper off the included Adhesive Pads and stick them onto the bottom of the Base Plate. Flip the Base Plate back over.

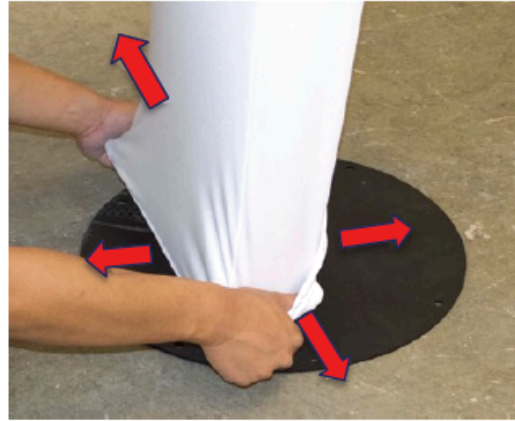
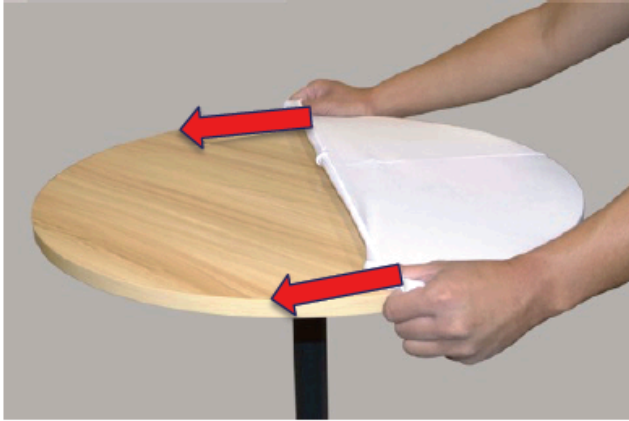


2. Insert the end of the Support Tube with the hole into the center hole on the Base Plate. **THE HOLE IN THE SUPPORT TUBE WILL NOT BE USED. DO NOT ALIGN THE HOLE IN THE SUPPORT TUBE WITH EITHER OF THE THREADED SCREW HOLES IN THE BASE PLATE.** Thread two Tightening Screws into the screw holes in the Base Plate and tighten until the Support Tube is held firmly in place.



3. Slip the center hole on the Table Top over the top of the Support Tube. Thread two Tightening Screws into the screw holes in the Table Top and tighten until the Support Tube is held firmly in place.

ASSEMBLY GUIDELINES



4. Slip the opening of the Scrim over the Table Top. Pull the Scrim downwards over the Support Tube, then stretch the opening of the Scrim around the edge of the Base Plate. The Scrim should stay in place all by itself.



ASSEMBLY COMPLETE!

FREQUENTLY ASKED QUESTIONS

Listed below are a few answers to common questions users may have.

1. What if the table is unsteady?

Make sure the table is installed on a level surface. Double check that the Adhesive Pads have been installed on the bottom of the Base Plate, and that all four Tightening Screws are firmly tightened.

2. What is the hole in the Support Tube used for?

The hole in the Support Tube is not used for anything. ***Do NOT align the screw holes with the hole in the Support Tube, as this will prevent the Support Tube from fitting securely in place.***

3. How do I secure the Scrim in place?

Once slipped over the Base Plate, the Scrim will hold itself in place.

TECHNICAL SPECIFICATIONS

Model: Decor Cocktail Table

Working Position: Upright only

Dimensions:

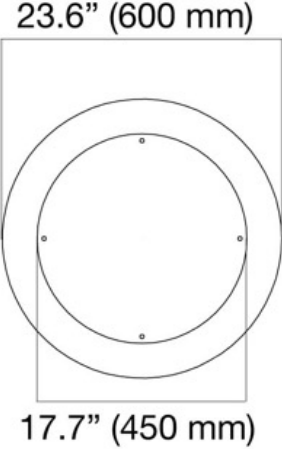
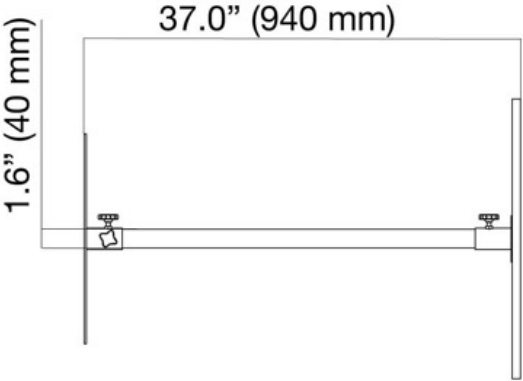
- **Table Top:** 23.6" (600mm) diameter x 0.7" (18mm) thickness
- **Base Plate:** 17.7" (450mm) diameter x 0.2" (4mm) thickness
- **Stand Tube:** 1.6" (40mm) diameter
- **Overall Height:** 37.0" (940mm)

Maximum Load: 66 lbs (30 kg)

Weight: 24 lbs (10.9 kg)

Specifications subject to change without any prior written notice.

DIMENSIONAL DRAWINGS



NOTE: Dimensions not to scale.

