



AF-6 / AF-6R
Special Effects Fan
User Manual

-English
-中文



© 2023 Antari Lighting & Effects Ltd.

1. Introduction	1
2. Safety Information.....	1
3. Package Items.....	4
4. Product Overview.....	5
5. Technical Label Information	6
6. Setting Up.....	6
7. Operation	7
8. Machine Status Message	9
9. DMX Connection	9
10. RDM.....	10
11. WTR-20 Wireless Control Operation (Optional)	11
12. SC-2 Cable Remote Control Operation (Optional)	13
13. Service and Maintenance.....	13
14. Technical Specifications.....	14
15. Machine Dimension	15
16. Exploded diagram.....	16
1. 前言	18
2. 安全注意事項	18
3. 包裝內容	20
4. 機器外觀概述	22
5. 技術標籤資訊	23
6. 機器安裝操作步驟	23
7. 操作說明	23
8. 機器狀態說明	25
9. DMX 說明.....	26
10. RDM 說明.....	27
11. WTR-20 無線控制模組配對及操作說明(選配).....	28
12. SC-2 有線控制器操作說明 (選配).....	29
13. 機器維護保養	29
14. 技術規格	30
15. 機器尺寸圖	31
16. 機台爆炸圖	32



User Manual

1. Introduction

Please read this user manual carefully before operating the machine.

Please put this manual in a place where you can refer to it at any time.

If you encountered any problems, please contact your local Antari dealer for advice and assistance.

2. Safety Information

CAUTION!



Please read the following safety information carefully before operating the machine. This information includes important safeguards about installation, usage and maintenance. Pay attention to all warning labels and instructions in this manual and printed on the machine.

DANGER!



Electrical shock

Always connect the machine to correct voltage. It will lead to electrical shock or burned and may cause serious consequences if connecting to incorrect or improper voltage.

WARNING!



Risk of electrocution

Always connect the machine to a protected circuit and ensure it is properly grounded to avoid risk of electrocution.

※ **Damage caused by the disregard of this user manual are not subject to warranty. Antari and its dealer will not accept liability for any resulting defects or problems.**

2.1 Installation

- Keep this device dry. This machine is not waterproof. Do not expose the machine to water splashes.
- Place the machine on a flat surface. Installed in a well ventilated area. Provide at least 50 cm space around the machine.
- Make sure there are no flammable materials close to the machine while operating. Never add flammable liquid of any kind to the machine.
- Before connecting the machine to power, always check the voltage indicate on the machine matches to your local AC voltage. Do not use the machine if AC power voltage does not match.
- If the supply cord is damaged, it must be replaced by a special cord or assembly available from your local Antari dealer for replacement.
- No user serviceable and modifiable parts inside. Never try to repair this product, an unauthorized technician may lead the machine to damage or malfunction.
- This product is for indoor use only! Do not expose to rain or moisture. If fluid is spilled, disconnect AC power and clean with a damp cloth. If liquid is spilled onto electronic parts, immediately unplug the machine and contact your local Antari dealer for advice.
- Pay attention to all warning labels and instructions on the machine before operation.

2.2 Operation

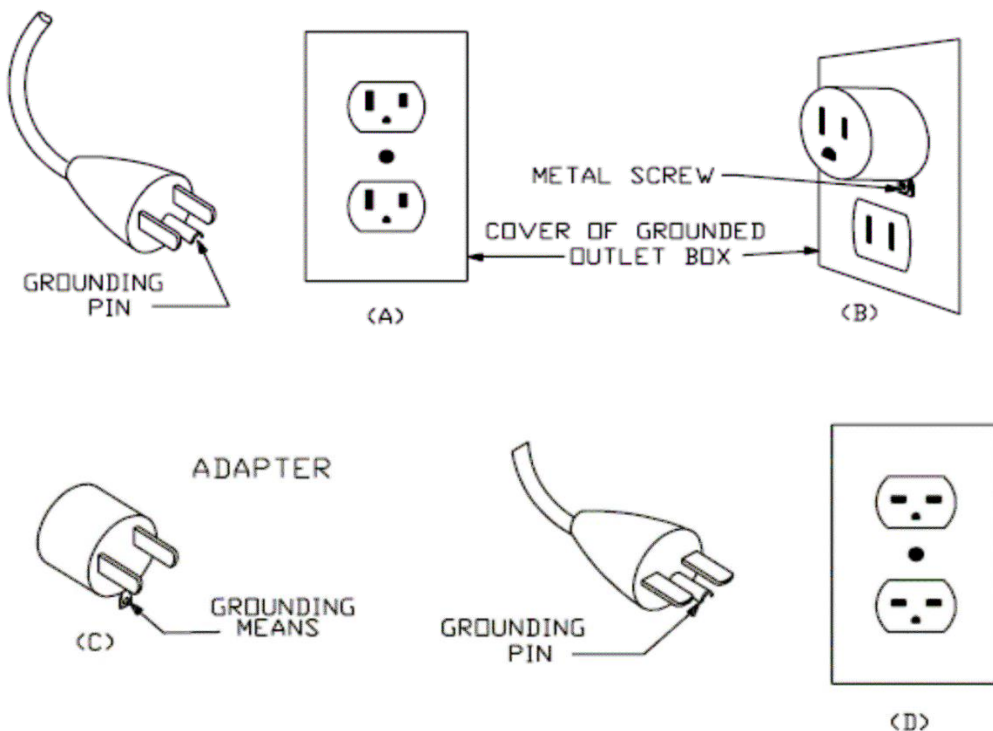
- Do not operate the machine with bundled power cables. It could be a fire hazard.
- Do not operate the machine in an area with unstable voltage. This may burn out internal components and cause machine fail to work.
- Do not use the machine against human, animal or flame. Make sure there are no flammable materials close to the machine.
- For adult use only. The machine is not to be used by persons (including children) with reduced physical, sensory or mental capabilities, or lack of experience and knowledge. Never leave the machine running unattended.
- Children being supervised not to play with the machine.
- If you hear a strange sound or experience machine fails to work, stop use it immediately. Turn off and unplug the machine, and contact your local Antari dealer for service.
- Turn off and unplug the machine while it's not in use.
- Make sure the machine is turned off before unplug it.
- Do not use the machine upside down or tilt it. It may damage the machine and make it malfunction.
- Be sure to unplug the machine before filling snow fluid.
- If the machine fails to work, unplug the machine and stop operation immediately. Contact your local Antari dealer for help.

2.3 Grounding Instruction

This appliance must be grounded in the event of malfunction or breakdown, grounding provides a path of least resistance for electric current to reduce the risk of electric shock. This appliance is equipped with a cord having an equipment-grounding conductor and a grounding plug. The plug must be plugged into an appropriate outlet that is properly installed and grounded in accordance with all local codes and ordinances.

DANGER – Improper connection of the equipment-grounding conductor can result in a risk of electric shock. The conductor with insulation having an outer surface that is green with or without yellow stripes is the equipment-grounding conductor. If repair or replacement of the cord or plug is necessary, do not connect the equipment-grounding conductor to a live terminal. Check with a qualified electrician or servicemen if the grounding instructions are not completely understood, or if in doubt as to whether the appliance is properly grounded. Do not modify the plug provided with the appliance. If it will not fit the outlet, have a proper outlet installed by a qualified electrician.

This appliance is for use on a nominal 120V circuit and has a grounding plug that looks like the plug illustrated in sketch A in Figure 73.1. A temporary adaptor, which looks like the adaptor illustrated in sketches B and C, may be used to connect this plug to a 2 pole receptacle as shown in sketch B if a properly grounded outlet is not available. The temporary adaptor should be used only until a properly grounded outlet can be installed by a qualified electrician. The green colored rigid ear, lug, and the like, extending from the adaptor must be connected to a permanent ground such as a properly grounded outlet box cover. Whenever the adaptor is used, it must be held in place by the metal screw.



3. Package Items

Immediately upon receiving the machine, carefully unpack the carton, check the content to ensure that all parts are present and have been received in good condition. If any parts appear damaged or mishandled from shipping, notify the shipper immediately and retain the packing material for inspection.

3.1 Standard Package

- 1 x AF-6 / AF-6R Special Effect Fan
- 1 x PowerCon True 1 Power Cord
- 1 x User Manual or scan QR code on technical label

3.2 Optional Accessories

Item Code	Description
SC-2	Cable Remote
WTR-20	W-2 Wireless Control Module (Includes W-2 Transmitter & W-2 Receiver) If you purchase AF-6R, the receiver has been installed onto the machine

4. Product Overview



01. Air outlet	06. Wireless Receiver Antenna
02. Air inlet	07. SC-2 Remote Connector
03. Power switch	08. LCD Display control panel
04. True 1 PowerCon Connector	09. Hanging Bracket
05. XLR 5-Pin DMX Connector	10. Technical Label

5. Technical Label Information

Read the information on the technical label before operation.

Technical label is attached on one side of control panel.



1. Model Name
2. Input Voltage
3. Frequency
4. Rated Power

5. Breaker
6. QR CODE for User Manual
7. Serial No.

6. Setting Up

CAUTION!



Risk of injury caused by falling objects.

Make sure installation location, fastening connecting and rigging hardware can hold at least 10 times the weight of the machine.

Make sure that the machine is installed securely and cannot fall down.

It will cause severe injuries if the machine falling down.

- Step 1.** Place the machine on a flat surface and in a suitably large area with at least 50 cm open space around the machine.
- Step 2.** Connect the machine to a suitably rated power supply. To determine the power requirement for the machine, refer to the label on the back of the machine.
- Step 3.** Turn on the machine, press the [VOLUME]/[DOWN] button on the control panel to start making fan output. To stop making fan output, press the [STOP] / [■] button
- Step 4.** To turn off the machine, press the [STOP] / [■] button and put the power switch to the OFF position.

7. Operation

AF-6 Special Effect Fan can be operated in the following modes. The machine can accept 1 kind of signal at 1 time. When using different control modes at the same time, the machine will work according to built-in control priority.

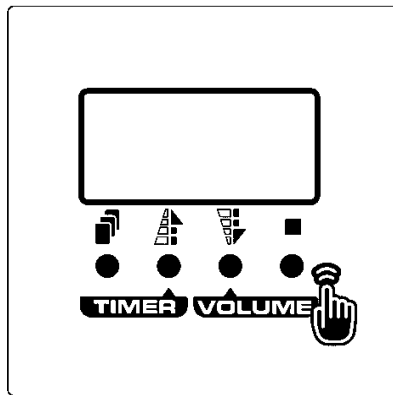
- Manual: operation via control panel
- Timer: operation via control panel
- DMX 512
- SC-2 Wired Remote (Optional accessory)
- W-2 Wireless Transmitter (Optional accessory)

Priority: DMX512 > W-2 Wireless Transmitter (Optional accessory) > SC-2 Wired Remote (Optional accessory) > Manual

Please see the following pages for instructions on your choice of operation.

7.1 Control Panel Operation

The machine can be operated in manual or timer modes with the onboard digital control interface



Button	Function
[MENU]	Scroll through setting menu
▲ [UP]/[TIMER]	Increase setting value/Activate Timer function
▼ [DOWN]/[VOLUME]	Decrease setting value/Activate Volume function
■ [STOP]	Deactivate Timer/Volume function Confirm/Leave Setting Menu

7.2 Control Menu

Menu	Item	Description
Manual	Interval Set 5s	Set interval time at timer mode from 5 to 999 seconds
	Duration Set 5s	Set duration time at timer mode from 5 to 999 seconds
	Timer Out XXX%	Set fan speed at timer mode from 1 to 100%
	Volume Out XXX%	Set fan speed at Volume mode from 1 to 100%
DMX	DMX512 Add: XXX	DMX-512 Address: 1-512
Setting	Wireless On/Off	Wireless Remote: On / Off
	W. Remote Pair/Upair	Wireless Transmitter : Pair / Unpaired Use ▲UP and ▼DOWN buttons to select Pair and Unpair radio wireless remote
	Quick Start Off/On	Turn On or Off Quick Start mode When it is turned on, once power up AF-6 fan, it will run last setting. Use ▲UP and ▼DOWN buttons to switch, and press ■STOP/ENTER button to memorize settings.
	KeySound Set On/Off	Keypad Sound : On / Off Turn On or Off the beep sound of pushing buttons Use ▲UP and ▼DOWN buttons to switch, and press ■STOP/ENTER button to memorize settings
	Backlite AlwaysOn/AutoOff	Screen Backlite: Always On /Auto Off Use ▲UP and ▼DOWN buttons to switch, and press ■STOP/ENTER button to memorize settings
	Default Proceed?	Reset to factory settings Press ■STOP button to reset AF-6 to Factory settings
	UID 1ED8 06020001	To view RDM's UID (Unique Identifier)
	Run Time 0000000H	To view total how many minutes or hours this AF-6 has been running

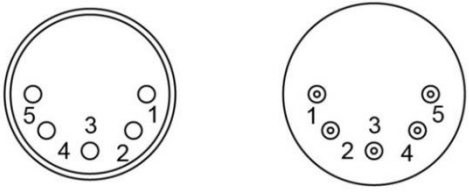
8. Machine Status Message

Screen	Description
AF-6 v1.0	Software Version
AC-120V 60Hz	Input Voltage
AF-6 Ready	Machine is ready to Operate
Remote Out XXX%	SC-2 cable remote operating (only shows when SC-2 is connected)
Volume Out XXX%	Running at volume mode
Interval XXX min	Running at timer mode, Interval time
Duration XXX min	Running at timer mode, Duration time
DMX-512 Add: XXX	Current DMX 512 channel
Wrong Voltage!	Wrong input voltage
AC Power Failure	AC Power Failure

9. DMX Connection

9.1 DMX Connector Pin Assignment

The machine provides a 5-pin XLR connector for DMX connection. The diagram below indicates pin assignment information.

 <p style="text-align: center;">5 Pin XLR</p>	Pin	Function
	1	Ground
	2	Data-
	3	Data+
	4	N/A
5	N/A	

The cap on the DMX IN port is a protection cover. Please remove it with your finger before operation.



9.2 DMX Channel Function

Each AF-6 occupied 1 DMX channel. Below is the DMX value and function table.

Channel	Mode	DMX Value	Function
Channel 1	Fan Speed	0-5	Fan Off
		6-255	Fan Speed 1-100%

10. RDM

The AF-6 Special Effect Fan is RDM enabled, allowing control system to configure, monitor and manage. See below table for supported RDM parameters.

GET Allowed	SET Allowed	Category 類別	RDM Parameter ID's (Slot 21-22)	Value	Required
		Network Management 網路管理	DISC_UNIQUE_BRANCH	0x0001	O
			DISC_MUTE	0x0002	O
			DISC_UN_MUTE	0x0003	O
O		RDM Information RDM 資訊	QUEUED_MESSAGE	0x0020	
O			SUPPORTED_PARAMETERS	0x0050	O
O			PARAMETER_DESCRIPTION	0x0051	O
O		Product Information 產品資訊	DEVICE_INFO	0x0060	O
O			PRODUCT_DETAIL_ID_LIST	0x0070	
O			DEVICE_MODEL_DESCRIPTION	0x0080	
O			MANUFACTURER_LABEL	0x0081	
O	O		DEVICE_LABEL	0x0082	

O			SOFTWARE_VERSION_LABEL	0x00C0	O
O	O	DMX512 Setup DMX512 設定	DMX_PERSONALITY	0x00E0	
O			DMX_PERSONALITY_DESCRIPTION	0x00E1	
O	O		DMX_START_ADDRESS	0x00F0	O
O			SLOT_INFO	(0x0120)	
O			SLOT_DESCRIPTION	(0x0121)	
O			DEFAULT_SLOT_VALUE	(0x0122)	
O			Sensors 感應器	SENSOR_DEFINITION	0x0200
O	O	SENSOR_VALUE		0x0201	
O			DEVICE_HOURS	0x0400	O
O	O	Control 控制	IDENTIFY_DEVICE	0x1000	O

11. WTR-20 Wireless Control Operation (Optional)

WTR-20 Wireless Control Module (Transmitter & Receiver) is an optional accessory for AF-6 Special Effect Fan. If you purchase AF-6R Special Effect Fan, the Wireless Receiver attached onto AF-6R before shipped from factory.

11.1 W-2 Wireless Transmitter & Receiver

- Battery : 27A 12V
- Effective distance : In a free open space, the effective distance is about 50 meters, actual usage depends on obstacle level; the effective distance varies.
- W-2 Wireless remote control system equipped with 4 buttons to activate, deactivate and adjust fan speed.

Button	Function
[A]	Turn on AF-6 fan
[B]	Turn off AF-6 fan
[C]	Raise fan speed
[D]	Lower fan speed



W-2 Wireless Transmitter



W-2 Wireless Receiver

11.2 Registering a Transmitter

- Transmitter can be paired or deleted from the receiver.
- Each receiver can pair up to 5 transmitters.
- Follow below steps to pair or delete transmitter.

Step 1. Press [MENU] button and select [Setting]. Scroll the menu until [W.Remote] shows on display.

UP: Pair
DOWN:Unpair

Step 2A. Press [UP / ▲] button to select [Pair] to pair a new transmitter. Press [STOP / ■] button, and press A button to pair it.

Step 2B. Press [DOWN / ▼] button to select [Unpair] to delete an existing transmitter.

12. SC-2 Cable Remote Control Operation (Optional)

Wired remote control SC-2 enables to control the machine from a remote location.

To operate the machine by remote control, connect the remote to the microphone jack located on the rear of machine. Use the switch to turn wind on/off, and use the rotary knob to adjust the output volume from 0~100%.

Button/Knob	Function
[OUT PUT VOLUME] Rotary Knob	Adjust fan output volume from 0 to 100%
[SWITCH ON/OFF] Button	Turn On/Off wind



SC-2 Connector



SC-2 Cable Remote

13. Service and Maintenance



DANGER!

Disconnect from mains before starting maintenance operation!

- Do not allow the machine to become contaminated.
- Remove dust from air vents with air compressor, vacuum or a soft brush.

- Only use a damp cloth to clean the casing.
- It is recommended to run the machine on a monthly basis in order to achieve best performance and output condition.
- Excessive dust, liquid and dirt built up will degrade performance and cause overheating.

14. Technical Specifications

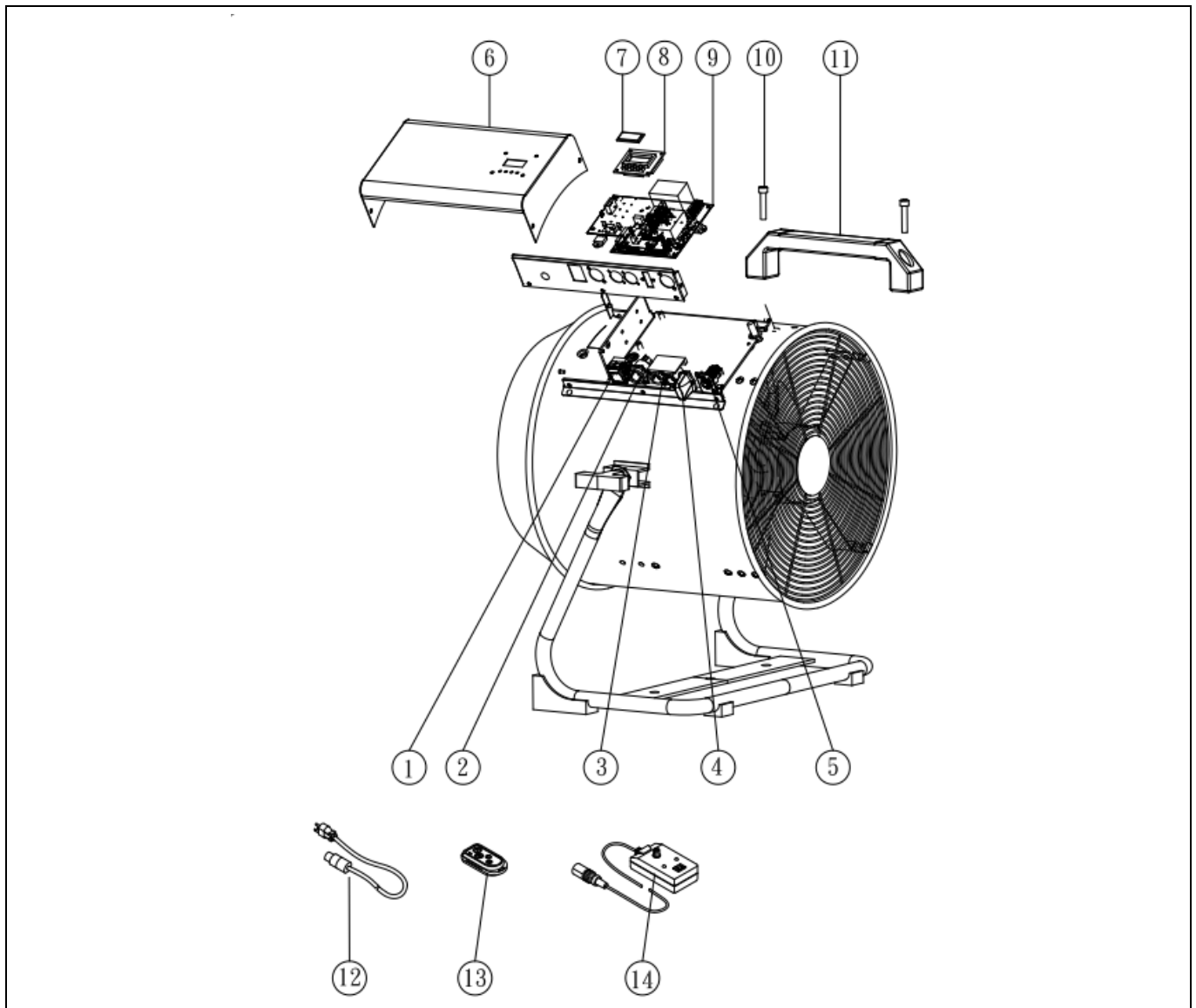
AF-6	
Input voltage	US model : AC 100-120V, 50/60Hz 2.08A EU model : AC 220-240V, 50/60Hz 1.04A
Rated power	250 Watt
Ambient temp/ range	5°C – 40°C (41°F – 104°F)
Air flow	2583 CFM (AC 120V/60Hz) 2550 CFM (AC 240V/60Hz)
Fan speed	1550 rpm (AC 120V/60Hz) 1530 rpm (AC 240V/60Hz)
Maximum noise level	81.5 dB
Control	Manual, Timer, DMX 512, Wireless (Optional), Cable Remote (Optional)
DMX channels	1 channel
Connection	Neutrik Powercon (Power) XLR 5-pin (DMX) XLR 4-pin (Cable Remote)
Optional accessories	WTR-20 Wireless Remote Control Module SC-2 Cable Remote
Dimension	L461.2 W596 H629.6 mm (L18.2 W23.5 H24.8 inch)
Weight	22.3 kg (49.1 lbs)

15. Machine Dimension



16. Exploded diagram

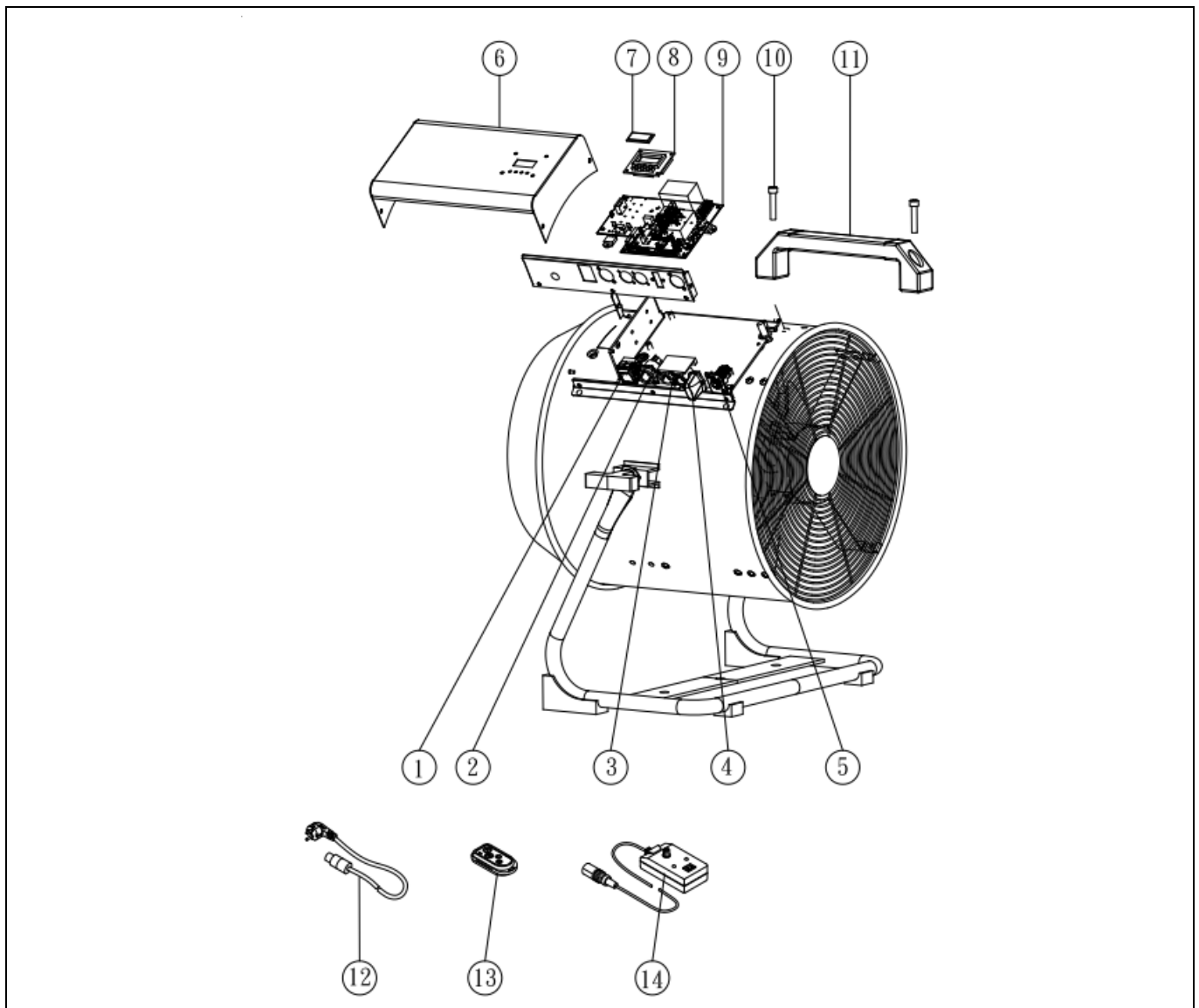
16.1 AC-120V



SPARE PARTS OF AF-6

1	C040039A0	Rocker switch/Power	8	AF-6-PCBC	Control P.C board
2	C04312621	Power socket (Inlet)	9	AF-6-PCB	Main P.C board
3	AF-6-PCBD5	P.C board DMX 5Pin	10	C01007010	socket head cap screw
4	W-2RA	Wireless Receiver (Optional)	11	C02025000	Handle
5	C045E3000	Control Inlet Socket	12	AF-6-PC	Power cord & Plug
6	S60000100-AF	Steel	13	W-2A	Wireless transmitter (Optional)
7	C02000700	Acrylic	14	SC-2	Wired remote controller (Optional)

16.2 AC-230V



SPARE PARTS OF AF-6

1	C040039A0	Rocker switch/Power	8	AF-6-PCBC	Control P.C board
2	C04312621	Power socket (Inlet)	9	AF-6E-PCB	Main P.C board
3	AF-6-PCBD5	P.C board DMX 5Pin	10	C01007010	socket head cap screw
4	W-2RE	Wireless Receiver (Optional)	11	C02025000	Handle
5	C045E3000	Control Inlet Socket	12	AF-6E-PC	Power cord & Plug
6	S60000100-AF	Steel	13	W-2E	Wireless transmitter (Optional)
7	C02000700	Acrylic	14	SC-2	Wired remote controller (Optional)



中文使用說明書

1. 前言

使用本產品之前，請務必詳加閱讀此說明書後正確使用。

請將本說明書放置在產品使用者可隨時查閱之處存放。

如果您有任何使用上的問題，請聯繫當地的 Antari 經銷商尋求清楚的說明與協助。

2. 安全注意事項



注意!

在使用機器以前，請仔細閱讀以下說明，此份說明書包含了如何在安全的情況下安裝使用機器，且會說明機器上所有標示的標籤所代表的意義。



危險!

請務必使用正確電壓，使用危險電壓，您在接觸電線時可能會遭受危險的電擊！



警告!

請務必將機器連結到有保護的電路，並確保有正確地接地，以避免觸電的危險。

※ 因忽視本使用手冊而造成的損壞不在保修範圍內。經銷商將不對由此產生的任何損壞或問題承擔任何責任。

2.1 安裝時

- 保持機器乾燥，此機器不防水，請勿使其遭水潑濺。
- 請在穩定且堅固、通風良好及週邊無存放及使用可燃性氣體或易燃物質的地方安裝及使用機器，勿遮蓋機器散熱部份，機器周邊至少應保留 50 公分的空間。

- 在插入電源插座前，請確認電源插座無損壞或鬆動，插座電源規格與機器電壓規格是否相符，電源插頭是否清潔與乾燥，確認電源線外觀無破損、扭擰、變形，請配合接地型插座，以避免觸電及火災的危險。
- 若電源線損壞，必須使用製造商或是其代理商提供的原廠電源線或組件進行更換。
- 請勿隨意拆卸、修理、改造機器，可能導致機器故障、損壞及造成火災或觸電危險。
- 本產品僅限室內使用，請勿將機器暴露在雨中或潮濕的環境，本產品非防水設計，遇潮濕、浸水或液體滲入時，請即刻拔掉插頭並以乾布擦拭乾淨後靜置，請勿連結機器與 AC 電源，請連繫您當地的 Antari 經銷商進行檢修。
- 在使用本機之前，請詳細的閱讀一次印刷在機器上的警語標示，機器上的警語標示說明如下：

WARNING! 警告!

Disconnect power before changing fuse. 更換保險絲前請務必斷開電源。

No user serviceable part inside. 內部無維修用之零配件。

Keep hands off. Do not put anything into the fan. 請將手遠離機台。請勿將任何物品放入風扇。

Operate the fan only with adult supervision. 僅在成人監督下使用。

Do not use the fan without protection grill. 請勿在沒有風扇護網的情況操作本機台。

Not water-resistant. Keep Dry. 本機台無防水功能。請保持乾燥。

Keep flammable materials off the fan. 請將風扇遠離易燃物質。

2.2 使用時

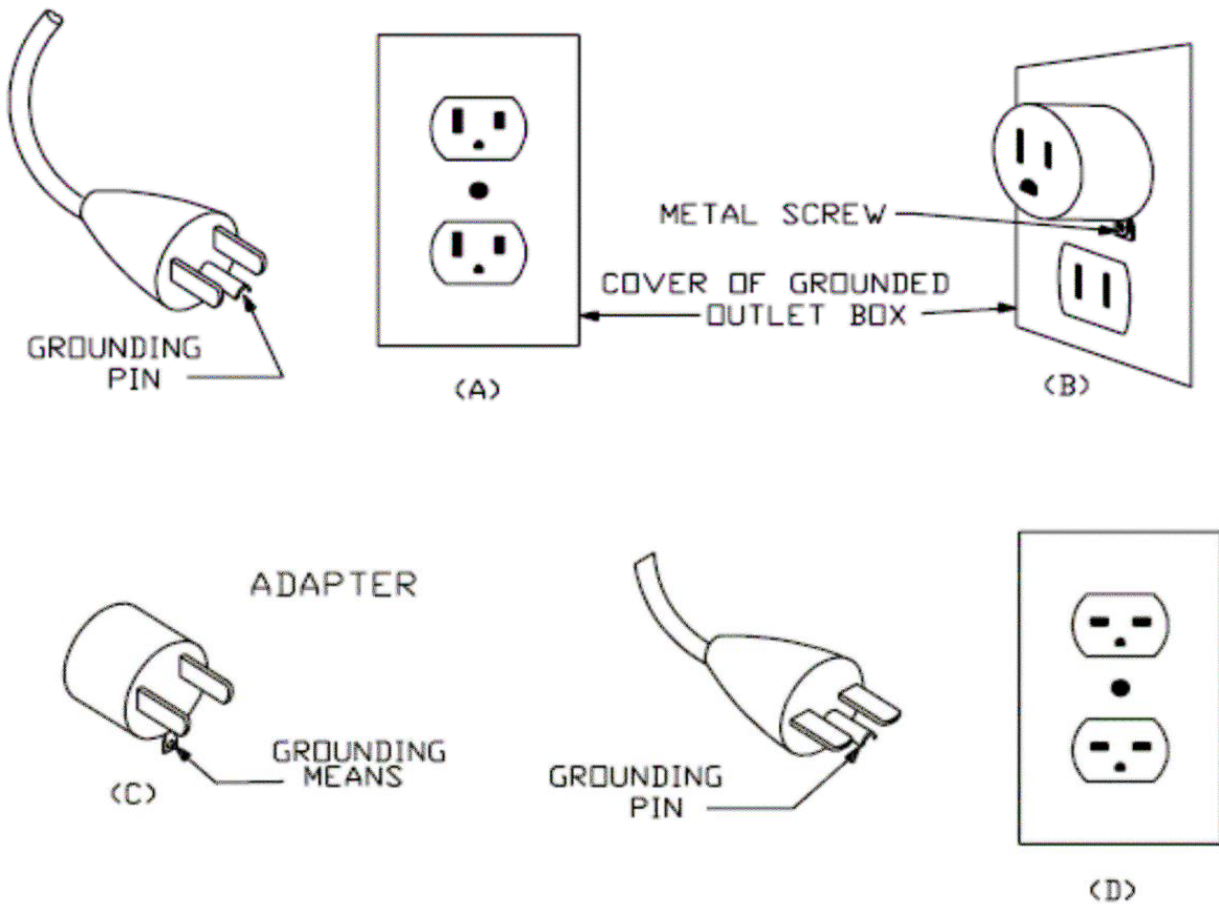
- 請勿在捆綁電源線的情況下使用，可能會發熱導致火災。
- 請勿在電壓不穩定的地區使用，可能導致機器不正常動作或機器內部元件燒毀。
- 操作機器時請勿將機器對著人體、動物、火焰使用，並請確認機器周邊勿存放及使用可燃性氣體或易燃物質。
- 機器限有行為能力之成人或專業人員操作，身體、感官或精神能力下降或缺乏經驗和專業知識的人（包括兒童）不得使用本設備，請勿在無人值守時讓機器運作，請於外出離去時確實關閉電源。
- 孩童應受監管，不能操作、嬉戲以及把玩本設備。
- 如果機器出現異常聲音或有任何不正常現象時，請立即停止工作，請將電源關閉及拔下機器插頭，並請連繫您當地的 Antari 經銷商。
- 不使用時請關機或請拔掉插頭，長時間不使用時請拔掉插頭。
- 移除機器及 AC 電源插座前，請確認機器已關機不在使用的狀態下。
- 請勿將機器放倒或傾斜使用，可能導致機器動作不正常或損壞。
- 請記得在運送本產品前，確認機器的油箱已清空並且包裝完整(建議以原包裝)。
- 如果您有任何使用上的問題，請聯繫當地的 Antari 經銷商尋求清楚的說明與協助。

2.3 接地說明

本設備必須正確接地，在發生故障或損壞時，接地為電流提供了一條電阻最小的路徑，以降低觸電的風險。本設備配有接地電源線，並且必須插入適當的接地插座，該插座已根據所有當地法規和條例正確安裝和接地。切勿折斷或移除接地插腳。

危險：若設備接地導體連接不當可能導致觸電危險。本設備接地導體外表面為綠色、帶或不帶黃色條紋的絕緣導體。如果需要修理或更換電源線或插頭，請勿將設備接地導體連接到帶電端子。如果不清楚接地說明，或者對本設備是否正確接地有疑問，請諮詢合格的電工或維修人員。請勿修改設備隨附的插頭。如果不適合插座，請由合格的電工安裝合適的插座。

本設備的電源線帶有一個接地插頭，請將插頭插入下圖中的圖 A 和圖 D 中所示的 2+1 孔插座。如果沒有接地的插座，可以使用一個類似於圖 C 中所示的轉接頭，將此轉接頭連接到圖 B 中的 2 孔插座。無論何時使用轉接頭，都必須用金屬螺絲將其固定到位，避免鬆脫。只有在合格的電工可以安裝正確接地的插座之前，才能使用臨時轉接頭。電源插頭伸出的接地導體必須連接到永久接地插座。插座必須要有盒蓋保護。



3. 包裝內容

在收到機器後，請立即小心地打開包裝紙箱，檢查所有內容，確認您所購買的機型及配件，如果有任何部件因運輸過程出現損壞或缺少，請立即連絡經銷商，並以原包裝退回檢查。

3.1 標準包裝

- 1 台 AF-6 /AF-6R 特效風扇
- 1 條 PowerCon True 1 電源線
- 1 本 使用手冊或掃描機身 QR CODE

3.2 選配說明

品項	描述
SC-2	有線控制器
WTR-20	無線控制模組 (含 W-2 發射器 & W-2 接收器) 如果您購買的機台型號為 AF-6R，機器出廠時已配有 WTR-20 無線控制模組且 W-2 接收器已安裝在機器上。

4. 機器外觀概述



01. 出風口	06. 無線訊號接收器
02. 進風口	07. SC-2 控制器連接座
03. 電源開關 & 復歸式電流斷路器	08. LCD 操作面板
04. Neutrik PowerCon 電源連接座	09. 吊架
05. XLR 5-Pin DMX 連接座	10. 技術標籤

5. 技術標籤資訊

使用本機台前，請詳閱技術標籤上的訊息



1. 機台型號
2. 使用電壓
3. 頻率
4. 瓦特數
5. 保險絲規格
6. 說明書 QR CODE
7. 機台流水序號

6. 機器安裝操作步驟



警告!

機台掉落可能會造成嚴重傷害。請確保本機台安裝牢固且不會掉落。

- 步驟1.** 將機器平放於穩定且堅固的平坦的表面，機器周圍至少應保留 50 公分的空間。
- 步驟2.** 將機器連接電源，連接之前，確認機器背後技術標籤上所標示要求功率，是否與電源相符。
- 步驟3.** 啟動機器電源。
- 步驟4.** 欲啟動風扇，按下控制面板上的 **VOLUME**；關閉風扇請按一下控制面板上的 **STOP**
- 步驟5.** 需關閉本機時，請確認機器已停止運轉，再將電源開關關閉即可，長時間不使用時請移除電源線。

7. 操作說明

AF-6 特效風扇可透過以下方式操作，但一次僅能接收一種控制訊號，同時使用不同控制方式下，機器會按內建的控制優先權運作。

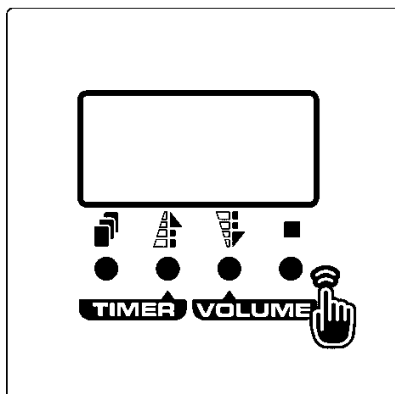
- 手動控制: 透過控制面板操作
- 定時控制: 透過控制面板操作
- DMX512

- SC-2 有線控制器 (選配)
- W-2 無線控制功能 (選配)

AF-6 控制方式優先順序為：DMX 512 > W-2 無線控制 (選配) > SC-2 有線控制器 (選配) > 手動。
有關個別控制方式的說明，請參閱以下頁面。

7.1 控制面板操作

AF-6 可透過機台上所搭載的控制面板進行操作控制。



按鍵	功能
[MENU]	瀏覽設定清單
▲[UP]/[TIMER]	增加數值/啟動定時模式
▼[DOWN]/[VOLUME]	減少數值/啟動輸出量模式
■[STOP]	關閉定時/輸出量模式，確認/離開設定清單

7.2 MENU 設定選單

選單	選項	功能簡述
Manual	Interval Set 5s	定時模式下，風扇運轉的間隔時間：5 至 999 秒。
	Duration Set 5s	定時模式下，風扇運轉的啟動時間：5 至 999 秒。
	Timer Out XXX%	定時模式下，風扇輸出量：1 至 100%。
	Volume Out XXX%	風量調整：1 至 100%。
DMX	DMX512 Add: XXX	DMX-512 位址: 1-512

Setting	Wireless On/Off	無線控制: 開啟/關閉
	W. Remote Pair/Upair	無線遙控器: Pair 配對 / Unpaired 取消配對 點選▲UP 和 ▼DOWN 按鍵來選擇, 並按■STOP 完成設定。
	Quick Start Off/On	記憶模式: 開啟 / 關閉 (接續斷電前的動作) 點選▲UP 和 ▼DOWN 按鍵來選擇, 並按■STOP 完成設定。
	KeySound Set On/Off	按鍵音: On 開啟 / Off 關閉 點選▲UP 和 ▼DOWN 按鍵來選擇, 並按■STOP 完成設定。
	Backlite AlwaysOn/AutoOff	LCD 背光: AlwaysOn 常亮/ Auto Off 自動關閉 點選▲UP 和 ▼DOWN 按鍵來選擇, 並按■STOP 完成設定。
	Default Proceed?	恢復原廠設置 按 ■STOP 鍵恢復原廠設置
	UID 1ED8 06020001	產品 UID 碼
	Run Time 0000000H	AF-6 機累計運轉時間: 0 - 9999999 小時

8. 機器狀態說明

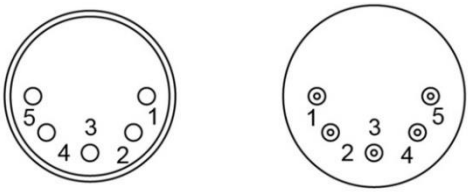
面板畫面	說明
S-600 v1.0	程式版本
AC-120V 60Hz	使用電壓
AF-6 Ready	AF-6 機台準備就緒
Remote Out XXX%	有線控器控制中 (插上有線控器 SC-2 時才會顯示此頁面)
Volume Out XXX%	手動啟動, 風扇運轉中
Interval XXX Sec	定時功能執行中_風扇停止 (間隔時間計數中)
Duration XXX Sec	定時功能執行中_風扇運轉 (持續時間計數中)

DMX-512 Add: XXX	DMX 連接中，顯示目前通道位址
Wrong Voltage!	電源電壓輸入錯誤 (插錯電)
AC Power Failure	AC 電源異常

9. DMX 說明

9.1 接點說明

本機可提供 5 PIN XLR 的 DMX 連接選擇。下為 PIN 的接點說明：

 <p>5 Pin XLR</p>	Pin	功能
	1	接地
	2	數據-
	3	數據+
	4	NA
5	NA	

DMX IN 端口上的蓋子是一個保護蓋，操作前，請用手指撥開即可輕鬆地將其取下。



9.2 DMX 通道功能

透過控制清單來設置 DMX 位址。本機佔用 1 個控制通道，機器預設位址為第一頻道。

通道	通道模式	DMX 數值範圍	功能
通道 1	風量調整	0-5	關閉
		6-255	開啟，風量 1-100%

10. RDM 說明

AF-6 特效風扇配有 RDM 功能，讓使用者可以經由 DMX 網路使用 RDM 功能進行機台的設定、監控、管理。

RDM 支援參數

GET Allowed	SET Allowed	Category 類別	RDM Parameter ID's (Slot 21-22)	Value	Required
		Network Management 網路管理	DISC_UNIQUE_BRANCH	0x0001	O
			DISC_MUTE	0x0002	O
			DISC_UN_MUTE	0x0003	O
O		RDM Information RDM 資訊	QUEUED_MESSAGE	0x0020	
O			SUPPORTED_PARAMETERS	0x0050	O
O			PARAMETER_DESCRIPTION	0x0051	O
O		Product Information 產品資訊	DEVICE_INFO	0x0060	O
O			PRODUCT_DETAIL_ID_LIST	0x0070	
O			DEVICE_MODEL_DESCRIPTION	0x0080	
O			MANUFACTURER_LABEL	0x0081	
O	O		DEVICE_LABEL	0x0082	
O			SOFTWARE_VERSION_LABEL	0x00C0	O
O	O	DMX512 Setup DMX512 設定	DMX_PERSONALITY	0x00E0	
O			DMX_PERSONALITY_DESCRIPTION	0x00E1	
O	O		DMX_START_ADDRESS	0x00F0	O
O			SLOT_INFO	(0x0120)	
O			SLOT_DESCRIPTION	(0x0121)	
O			DEFAULT_SLOT_VALUE	(0x0122)	
O		Sensors 感應器	SENSOR_DEFINITION	0x0200	
O	O		SENSOR_VALUE	0x0201	

O			DEVICE_HOURS	0x0400	O
O	O	Control 控制	IDENTIFY_DEVICE	0x1000	O

11. WTR-20 無線控制模組配對及操作說明(選配)

WTR-20 無線控制模組(發射器&接收器)為 AF-6 選配配件。如果您是訂購型號 AF-6R，接收器於出廠時已安裝在機台上。

11.1 W-2 無線發射器說明

- 發射器：使用 27A 12V 電池
- 接收距離：在無障礙物的開放空間，有效距離為 50 公尺。實際收訊狀況根據障礙物多寡及環境因素而有所不同。
- W-2 無線發射器配有 4 個按鈕，可以用來啟動、關閉以及調整風扇轉速。



W-2 無線發射器

按鈕	功能
[A] 鍵	啟動 AF-6
[B] 鍵	關閉 AF-6
[C] 鍵	調高風量
[D] 鍵	調低風量



W-2 無線接收器

11.2 無線功能配對說明

- 接收器能與發射器對頻及取消對頻。
- 每個接收器可以與最多 5 組發射器對頻。
- 請按照以下步驟來取消與對頻無線發射器。

步驟 1：按[MENU]鍵進入選單[Setting]，選擇[W.Remote]無線控制配對設定畫面。

UP: Pair
DOWN:Unpair

步驟 2A：按 [UP / 箭頭向上] 按鍵選擇[Pair] 對頻新的發射器，按[STOP]鍵後，再 W-2 無線發射

器上的任何按鍵來完成對頻。

步驟 2B：按 [DOWN / 箭頭向下]按鍵選擇[Unpair]按鍵來刪除現已對頻之發射器。

12. SC-2 有線控制器操作說明 (選配)

使用 SC-2 控制器操作機器時，請將其連結位於機器背面的 4 Pin 插座。SC-2 配有 1 個按鈕及 1 個旋鈕，可控制啟動/關閉機器及調整風量。

按鈕/旋鈕	功能
[OUT PUT VOLUME]旋鈕	調整風量 0 至 100%
[POWER]紅色按鈕	啟動/關閉風扇



SC-2 控制器連接座



SC-2 有線控制器

13. 機器維護保養



危險!

維修保養之前，請務必斷開電源！

- 請保持機器清潔，不要讓機器髒汙。
- 可以使用空氣壓縮機、吸塵器或軟刷除去機器上的灰塵。
- 機殼可使用濕布擦拭。
- 建議每月至少讓機器運轉一次，以保持機器處於最佳的性能和輸出條件。
- 機器上過多的灰塵、液體殘餘累積的髒污會降低機器工作性能，導至散熱不良。

14. 技術規格

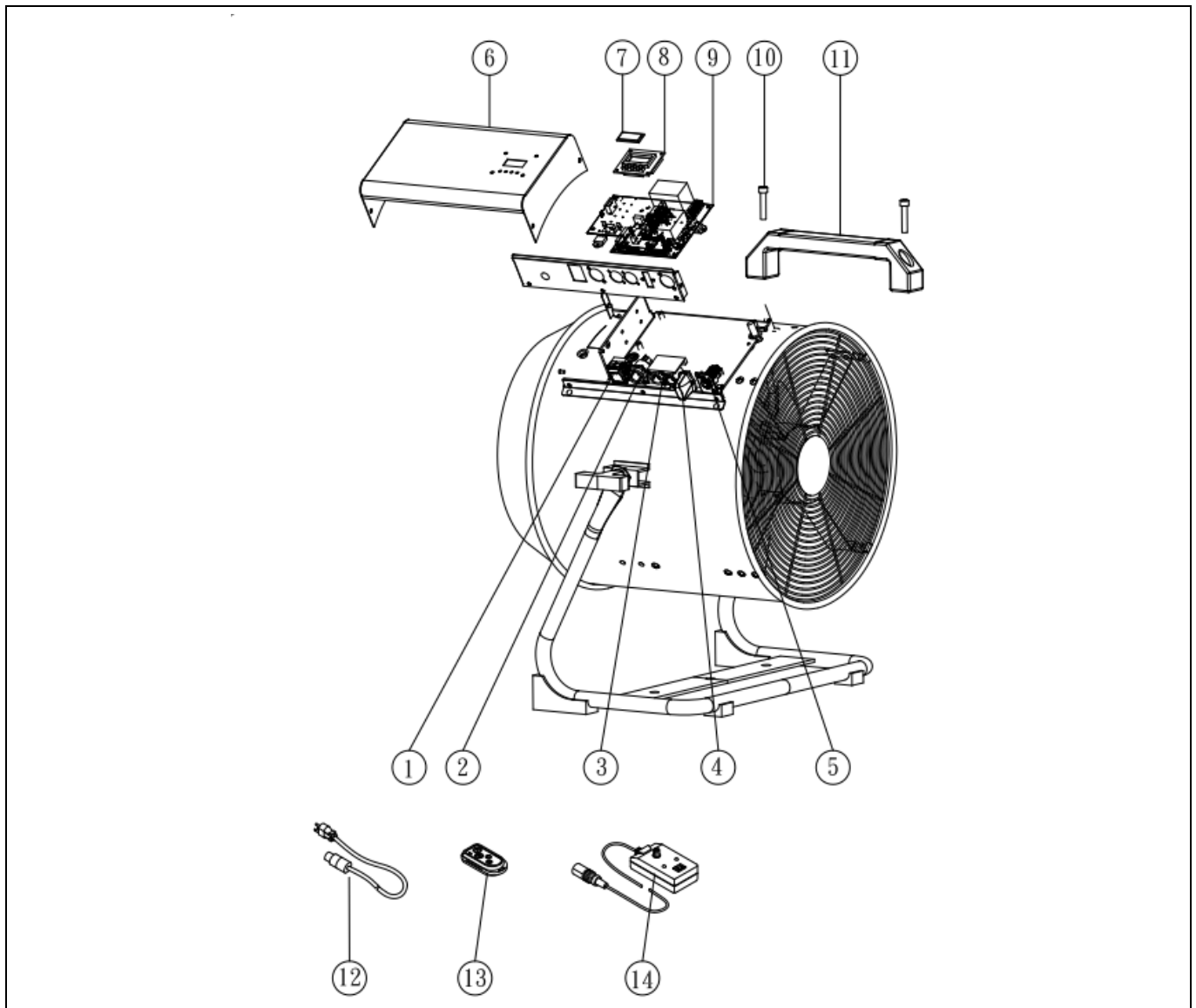
AF-6	
電壓	美規 : AC 100-120V, 50/60Hz 2.08A 歐規 : AC 220-240V, 50/60Hz 1.04A
額定功率	250 瓦
適用環溫	5°C – 40°C (41°F – 104°F)
風量	2583 CFM (AC 120V/60Hz) 2550 CFM (AC 240V/60Hz)
風速	1550 rpm (AC 120V/60Hz) 1530 rpm (AC 240V/60Hz)
最大噪音值	81.5 dB
控制方式	手動控制、定時控制、DMX 512、 無線控制(選配)、有線控制(選配)
DMX 512 通道	佔用 1 個通道
連接座	Neutrik Powercon (主電源) XLR 5-pin (DMX) XLR 4-pin (有線控制器連接座)
選擇性配件	WTR-20 無線控制器模組 SC-2 有線控制器
尺寸	長 461.2 寬 596 高 629.6 公釐 (長 18.2 寬 23.5 高 24.8 英吋)
重量	22.3 公斤 (49.1 磅)

15. 機器尺寸圖



16. 機台爆炸圖

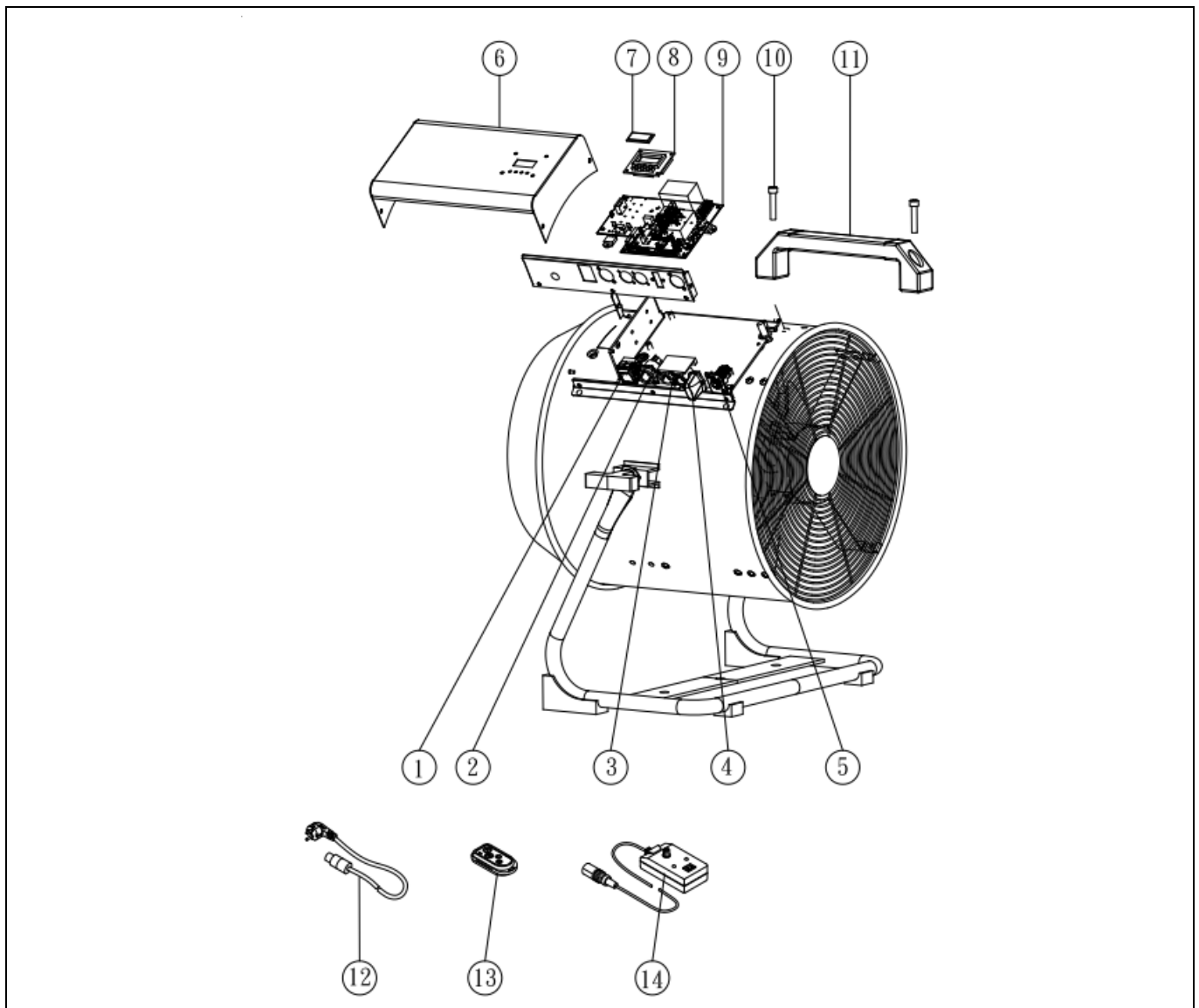
16.1 AC-120V



SPARE PARTS OF AF-6

1	C040039A0	Rocker switch/Power	8	AF-6-PCBC	Control P.C board
2	C04312621	Power socket (Inlet)	9	AF-6-PCB	Main P.C board
3	AF-6-PCBD5	P.C board DMX 5Pin	10	C01007010	socket head cap screw
4	W-2RA	Wireless Receiver (Optional)	11	C02025000	Handle
5	C045E3000	Control Inlet Socket	12	AF-6-PC	Power cord & Plug
6	S60000100-AF	Steel	13	W-2A	Wireless transmitter (Optional)
7	C02000700	Acrylic	14	SC-2	Wired remote controller (Optional)

16.2 AC-230V



SPARE PARTS OF AF-6

1	C040039A0	Rocker switch/Power	8	AF-6-PCBC	Control P.C board
2	C04312621	Power socket (Inlet)	9	AF-6E-PCB	Main P.C board
3	AF-6-PCBD5	P.C board DMX 5Pin	10	C01007010	socket head cap screw
4	W-2RE	Wireless Receiver (Optional)	11	C02025000	Handle
5	C045E3000	Control Inlet Socket	12	AF-6E-PC	Power cord & Plug
6	S60000100-AF	Steel	13	W-2E	Wireless transmitter (Optional)
7	C02000700	Acrylic	14	SC-2	Wired remote controller (Optional)



C08AF6000